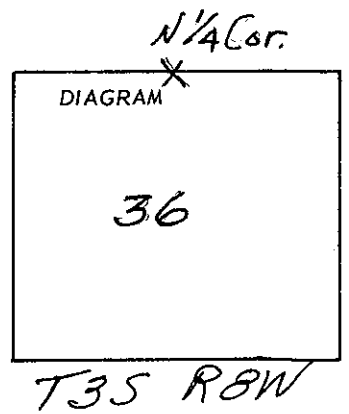


CERTIFIED RECORD OF LAND CORNER MONUMENTATION

(Reference FSH 5681.65)

History of original corner establishment:

Surveyed by Hendry Meldrum
under Contract No. 500 April 24, 1884



"Post"

Maple 4" S 34° W 161ks.
Barberry 3 1/2" N 30° 30' W 151ks.
in dense maple thicket.

Description of corner evidence found:

Found old squared post & F.S. Tags on 2 very large Alders.
No evidence of original Corner

B. W. Udehl

Description of monument and accessories I established to ^{re-establish} ~~perpetuate~~ the original location of this corner

At mid point between Section Corners I set a 2" galv. iron pipe with brass Cap on top. MKD ^{1/4 525} 4 536
from which a 28" ALDER bears N 7 E 93 f Scribed ¹⁹⁶⁶ 1/4 525 ORE 2301
" " " 28" Doug. Fir bears S 42° W 51 7/8 " 1/4 536 CS BT.
along Side pipe I set a ~~post~~ steel fence post with F.S. Bdy Marker.
a proposed road survey bears NE about 75 ft. Corner is on a NE Slope about 60' West of a small creek flowing North and about 200' South of the main drainage Creek flowing EAST.

Office of County Surveyor County of Tillamook
State of OREGON, I hereby certify that the within instrument was filed in this office for record on the 6th day of FEBRUARY, 1967, at 4³⁰ o'clock P.m., (signed)
[Signature] by [Signature]
(COUNTY OFFICIAL) (DEPUTY)

BOOK 3